

DRAWING APPROVAL:

THIS DRAWING REFLECTS OUR INTERPRETATION OF THE INFORMATION PROVIDED BY THE DEALER ON THE ES125 ORDER FORM. THIS INFORMATION IS THE DEALER'S RESPONSIBILITY, AND IS THE BASIS FROM WHICH THE ES 125 LIFT IS DESIGNED AND MANUFACTURED. PLEASE INDICATE THE REQUESTED ACTION BY CHECKING ONE OF THE FOLLOWING BOXES AND SIGNING BELOW TO AUTHORIZE COMPLETION OF THIS ORDER.

- APPROVED WITH NO EXCEPTIONS
 MANUFACTURE ELEVATOR AS PER DRAWING
 CHANGE AS NOTED, REAPPROVAL REQUIRED
 MAKE CHANGES AS NOTED, SEND CORRECTED DRAWING FOR REAPPROVAL BEFORE MANUFACTURE

SIGNATURE: _____ DATE: _____

CAUTION: ONCE THE DRAWING IS APPROVED, JOB CANCELLATION FEES WILL BE 50% OF JOB PRICING

PLEASE CONFIRM THE APPLICABLE CODES IN YOUR AREA:

BY DEFAULT, THE ASME A18.1 1999, WILL BE THE APPLICABLE CODE.

ITEMS PROVIDED BY OTHERS:

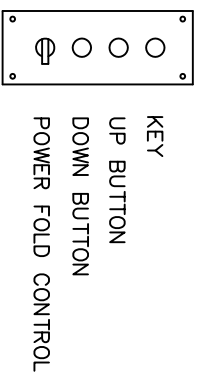
- 1-BRANCH CIRCUIT AND LOCKABLE FUSED DISCONNECT: 110 VAC/15AMP/1 PHASE
- EQUIPMENT AND WIRING MUST MEET THE REQUIREMENTS OF ARTICLE 620 OF THE NEC.

2-CERTIFICATION OF THE STRUCTURAL CAPACITY OF THE BUILDING OR OF THE STRUCTURE SUPPORTING THE ELEVATOR (SEE LOADS ON THIS DRAWING).

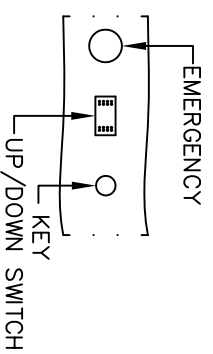
3-MINIMUM LIGHTING OF 100 LX, AT THE DRIVE SYSTEM, AT LANDINGS AND ON THE PLATFORM ALONG OF THE TRAVEL. EMERGENCY LIGHTING OF 2 LX FOR A MINIMUM OF ONE HOUR ON THE PLATFORM ALONG THE TRAVEL.

4- THIS EQUIPMENT MUST BE INSTALLED IN COMPLIANCE WITH ASME A18.1 1999 CODE, BY A QUALIFIED TECHNICIAN.

LOWER AND UPPER CALL STATION



CAR STATION



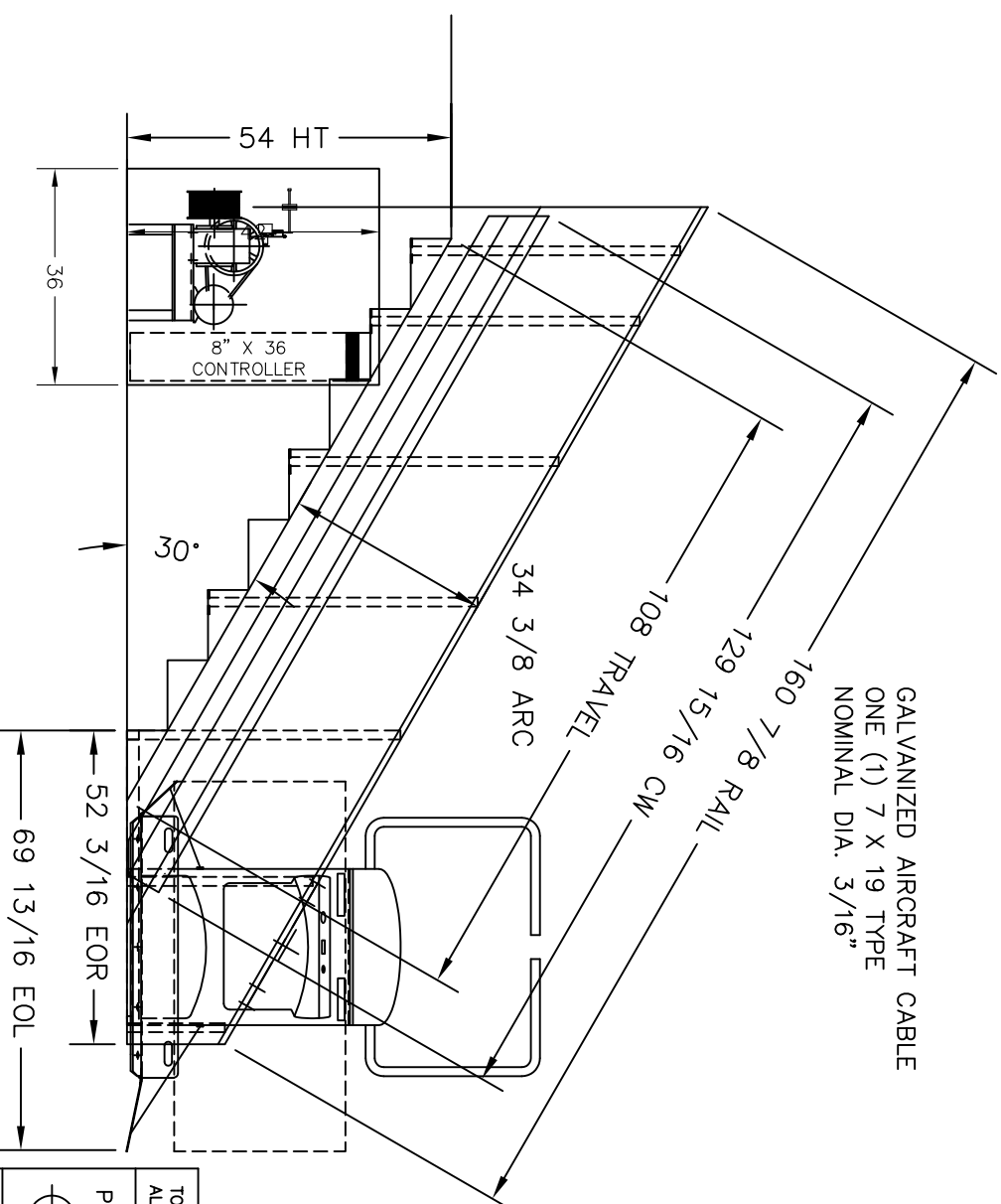
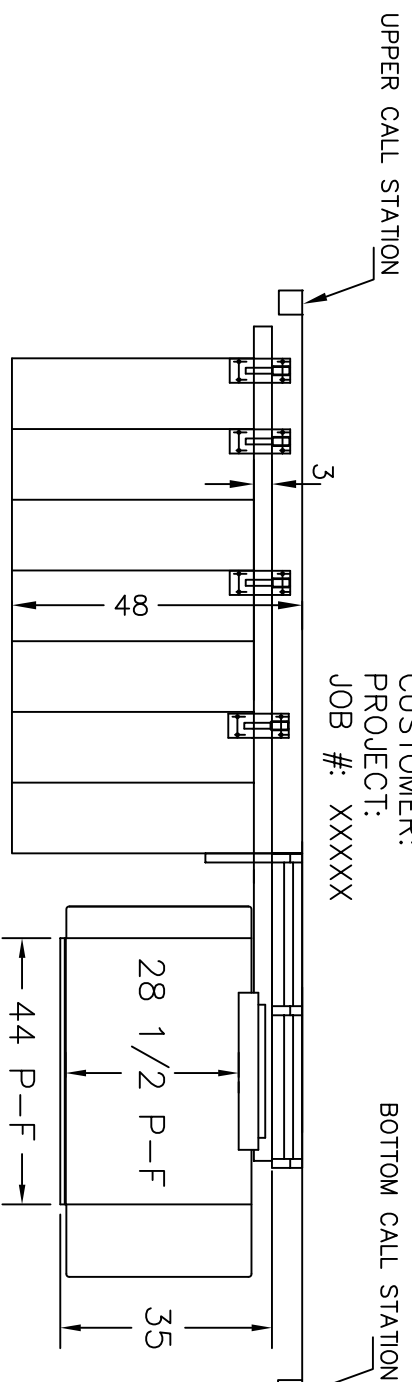
ABBREVIATION

- TH.: THEORETICAL
 C/W: COUNTER WEIGHT
 EOC: END OF CABINET
 EOL: END OF LIFT
 EOR: END OF RAIL
 EOW: END OF WALL
 VF: VERIFICATION IN FIELD REQUIRED

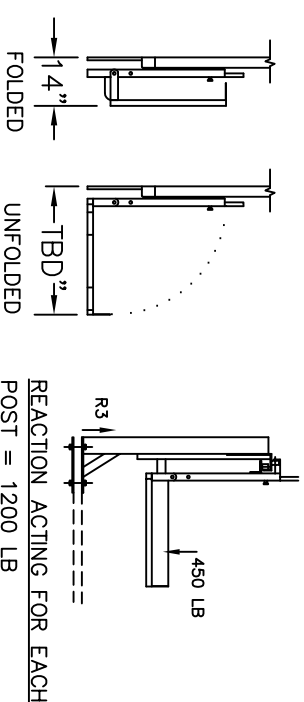
WOODEN LOAD BEARING WALL
 GUIDE RAIL: STEEL 3/16" THICK
 ANCHORING TO SUPPORT WALL:
 LAG BOLT HEX $\phi 1/4 \times 5"$
 MIN. EMBEDMENT DEPTH: 3"
 INTO THE WOOD
 PREDRILL WOOD $\phi 1/8"$
 MINIMUM OF 2 EVERY 16"
 THROUGH TOP METAL RAIL

DEALER INFORMATION:

CUSTOMER:
 PROJECT:
 JOB #: XXXXX



WARNING:
 THE CONFORMITY FOR ACCESS TO THE PLATFORM IS THE DISTRIBUTOR'S RESPONSABILITY.



PULL-OUT FORCE ON SUPPORT POST IS 1200 LB (APPROX) ADEQUATE STRUCTURAL SUPPORT TO BE PROVIDED FOR THE STEPS ALONG THE STAIRS.

STARWAY PLATFORM LIFT MODEL ES-125P
 ACCESS TO PLATFORM: IN LINE ACCESS
 SIDE OF INSTALLATION: RIGHT
 ANGLE OF STAIRCASE: 30.0°
 WIDTH OF STAIRCASE: 48"
 LENGTH OF STAIRWAY: 108"
 NUMBER OF RAIL: 1
 APPROX. RAIL WEIGHT: 273 LBS
 NUMBER OF RISERS: 8
 AVERAGE RISER: 6 3/4"
 AVERAGE TREAD: 11 3/4"

OPTIONS:
 POWER FOLD PLATFORM
 3 POSITIONS SAFETY ARMS
 BOTTOM LANDING POST
 SELF SUPPORT POST (4)
 APPROVAL DRAWING

1. RATED LOAD : 450 Lbs (204 kg)
2. CAPACITY : ONE PERSON IN WHEELCHAIR
3. RATED SPEED : 21 ft/min
4. WEIGHT OF CAR : 205 Lbs
5. POWER SUPPLY : 120VAC/15A/1Ph/60hz
6. MOTOR : 120VAC, 1/2 H.P., 1Ph
7. CONTROL : 24 VAC
8. OPERATION : CONSTANT PRESSURE
9. PLATFORM SIZE : 28.5 X 44
10. ELEVATING CLASS : UNENCLOSED STAIR PLATFORM LIFT
11. BEIGE COLOR STANDARD
12. LOCATION : INDOOR
13. TYPE OF INSTALLATION : PUBLIC

TOUS RENSEIGNEMENTS CONTIENS SUR CE DESSIN SONT STRICTEMENT CONFIDENTIELS.
 ALL INFORMATION CONTAINED ON THIS DRAWING IS STRICTLY CONFIDENTIAL.

PROJECTION GENERAL TOLERANCES
 FRAC: ±1/4"

SCALE: NTS DRAWN BY: A BERTRAND

APPROVED: NIL DATE: 03/03/08

DRAWING NO: CUSTOM REV# 0 PAGE: 1 TITLE: LIFT FOR HANDICAPPED

MODEL: ES-125 INCLINED LIFT
SIB SERVICES INDUSTRIELS SAVARIA INC.